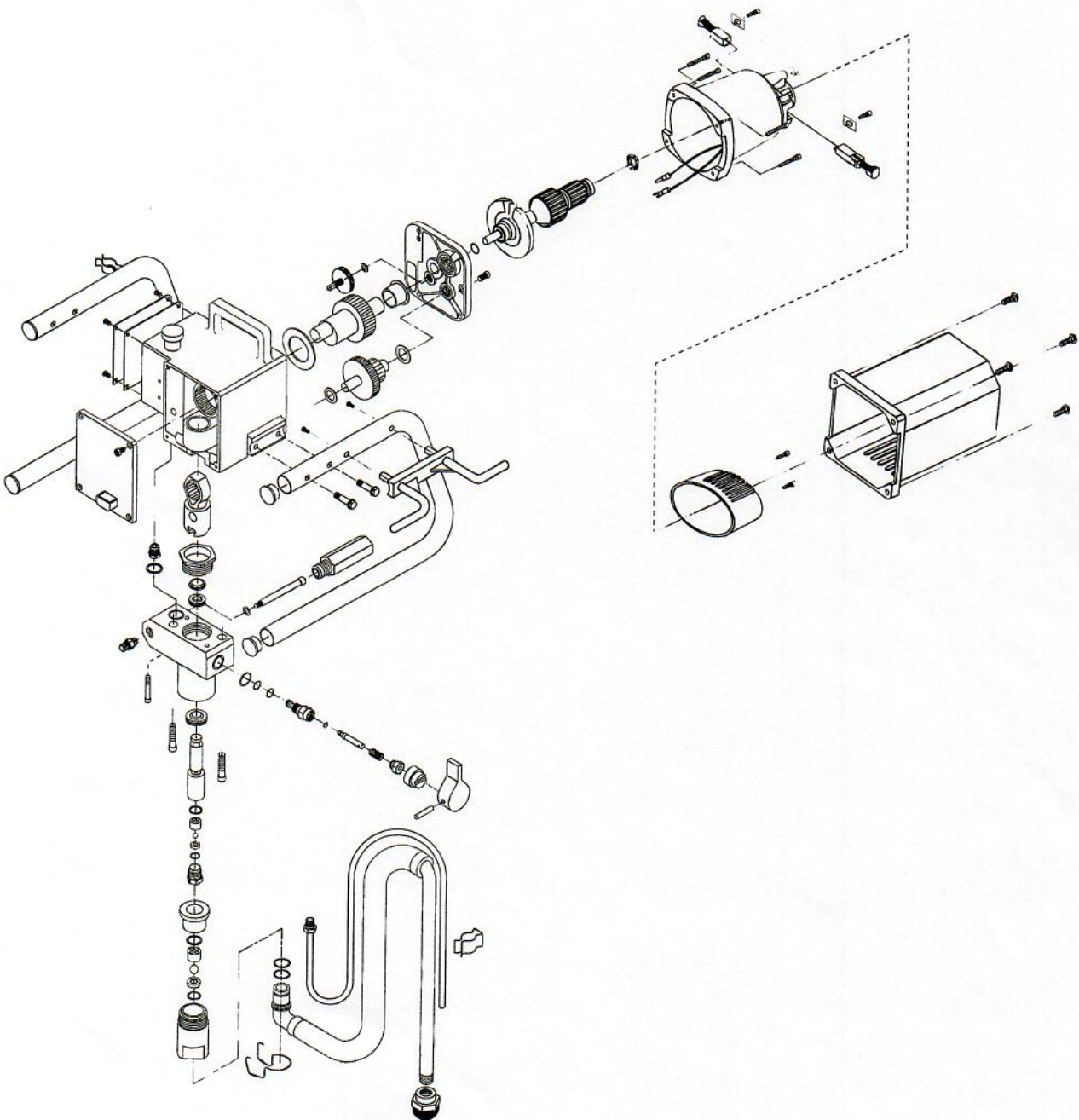
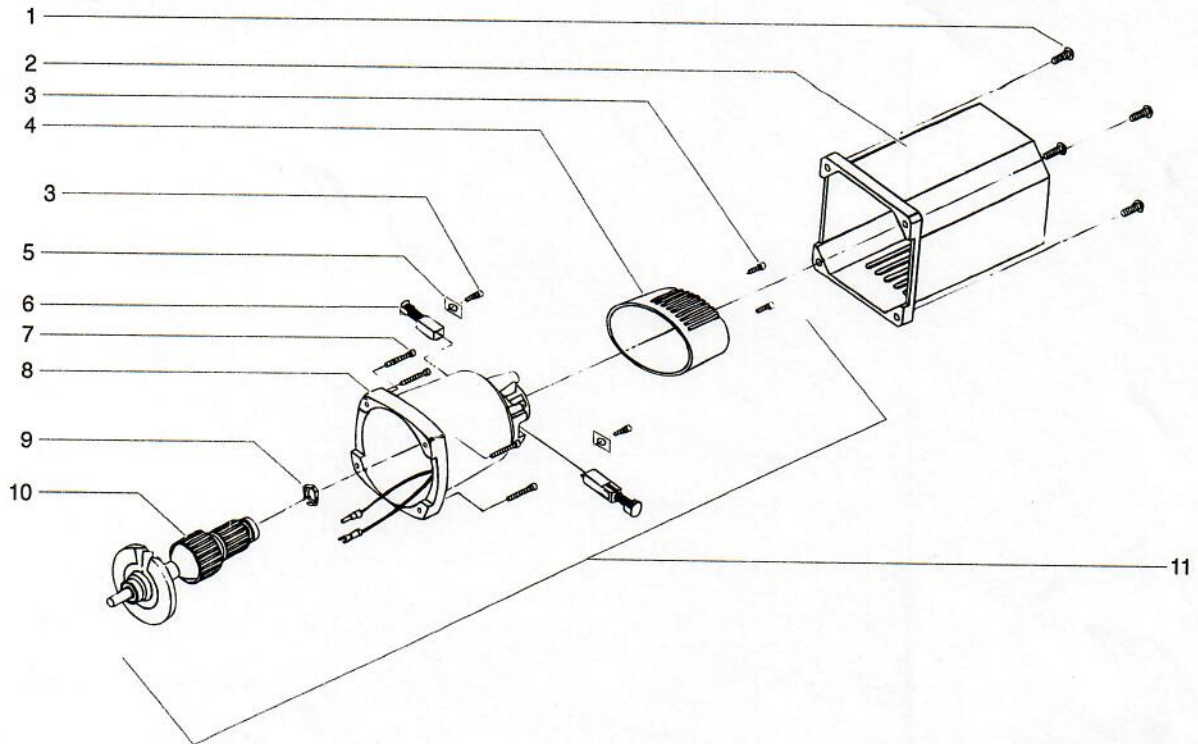


Parts List Main Assembly

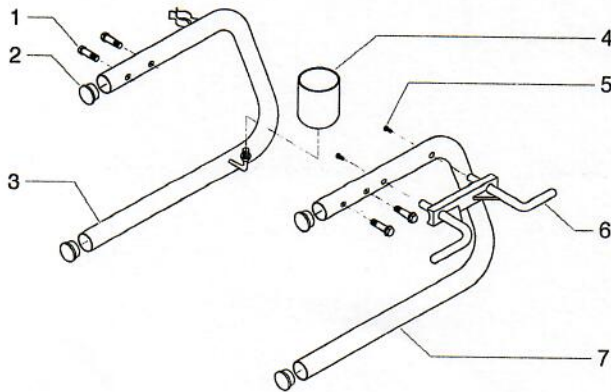


Motor Assembly



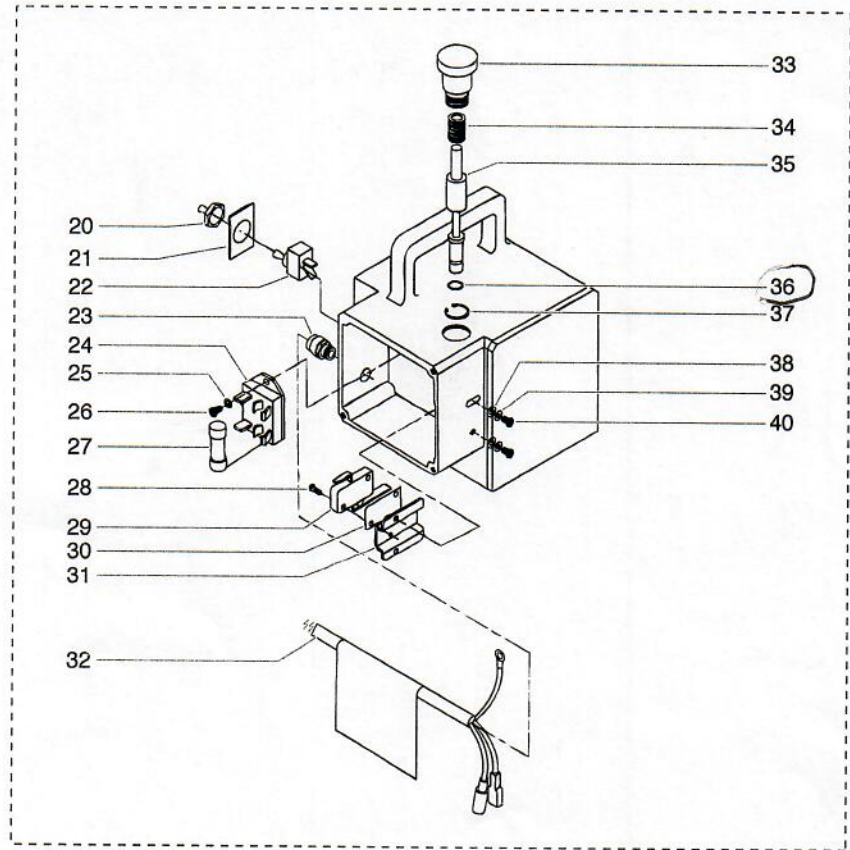
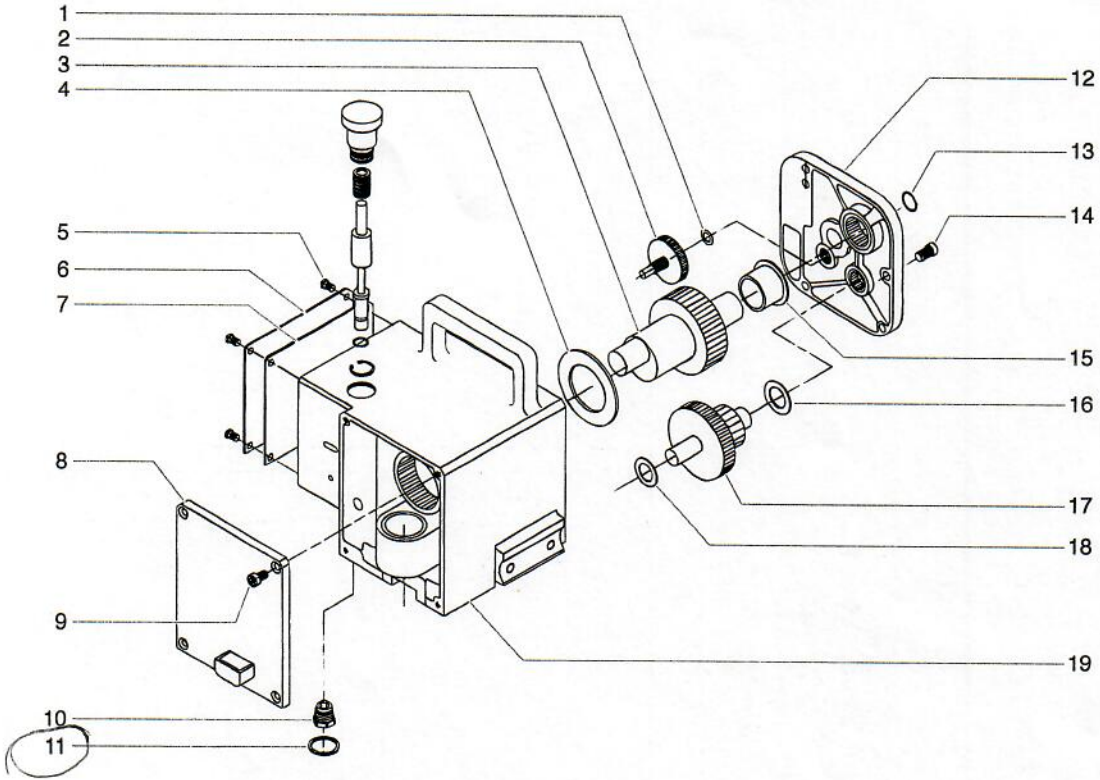
Item	Part #	Description	Quantity	Item	Part #	Description	Quantity
1	700-716	Screw, 1/4 x 1".....	4	7	700-766	Screw, 8-32 UN x 1.125	4
2	704-101	Rear cover w/label	1	8	-----	Motor housing and field	1
3	700-063	Screw, 8/16 x 3/4".....	4	9	700-640	Spring washer.....	1
4	700-632	End cap.....	1	10	-----	Armature	1
5	700-039	Clamp	2	11	700-070	Motor kit complete	
6	700-040	Brush and tube	2			(includes items 3, 4, 5, 6, 8, 9, & 10) ...	1
	700-062	Brush and tube (230V units)			700-084	Motor kit complete (230V units)	

Stand Assembly



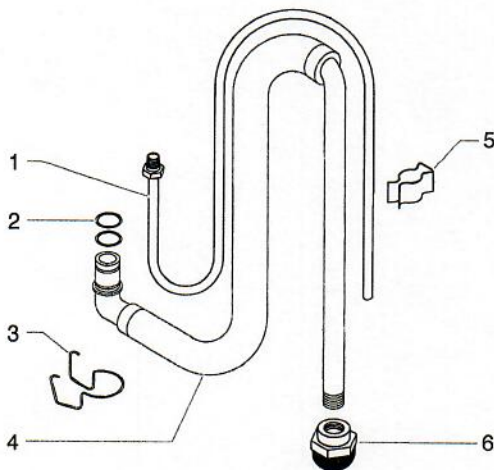
Item	Part #	Description	Quantity
1	765-126	Screw.....	4
2	700-674	End cap.....	4
3	704-092	Leg, left (includes items 2 and 4)	1
4	700-781	Drip cup	1
5	700-069	Screw.....	2
6	700-761	Cord wrap	1
7	704-091	Leg, right (includes items 2, 5, and 6)	1

Gear Box Assembly



Item	Part #	Description	Quantity	Item	Part #	Description	Quantity
1	700-511	Thrust washer	1	25	704-126	Washer	2
2	700-732	Pinion gear	1	26	730-260	Screw	2
3	710-120	Crankshaft/gear assembly	1	27	700-720	Fuse	1
4	700-680	Thrust washer	1		700-686	Fuse, 5A (230V units)	
5	730-260	Screw	4	28	704-122	Screw	2
6	761-132	Cover plate	1	29	704-128	Pressure switch	1
7	761-192	Insulator plate	1	30	704-130	Insulator plate	1
8	704-019	Front cover	1	31	704-104	Bracket	1
9	704-108	Screws	4	32	765-054	Power cord	1
10	704-119	Transducer kit (includes item 11)	1		700-280	Power cord (230V units)	
11	704-118	Gasket	1		200-209	Power cord (110V units)	
12	704-042	Rear bearing housing	1	33	704-102	Pressure control knob	1
13	704-044	O-ring	1	34	704-123	Spring	1
14	700-681	Screw	4	35	704-114	Switch stem (includes item 36)	1
15	700-593	Thrust washer	1	36	761-207	O-ring	1
16	700-688	Thrust washer	1	37	704-124	Snap ring	1
17	765-067	Output pinion gear	1	38	704-125	Washer	2
18	700-514	Thrust washer	1	39	704-126	Lockwasher	2
19	704-041	Pump housing	1	40	700-139	Screw	2
20	700-645	Rubber boot	1	41	700-191	In-line fuse (230v units only)	1
21	700-775	ON/OFF plate	1	42	761-726	Capacitor assembly (110V units, not shown)	
22	700-646	ON/OFF switch	1	43	761-735	EMI suppression core (110V units, not shown)	
23	765-063	Strain relief	1				
24	700-657	Motor starter	1				
	700-855	Motor starter (230V units)					

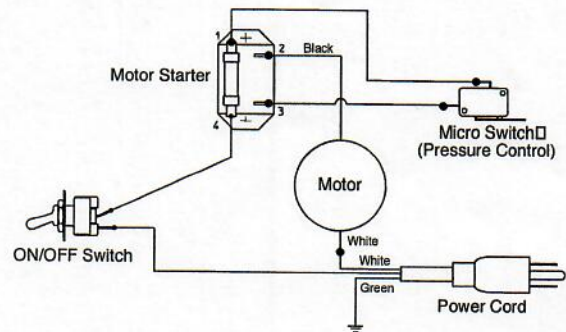
Suction Set Assembly (P/N 704-100)



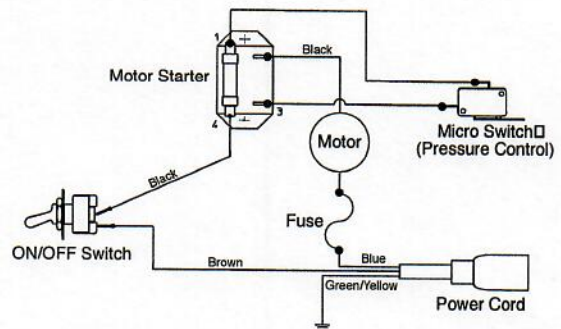
Item	Part #	Description	Quantity
1	704-116	Return tube	1
2	704-121	O-ring	2
	704-109	O-ring (for hot solvents, optional)	
3	704-127	Retaining clip	1
	704-129	Retaining ring (alternate, included in literature set)	
4	700-1023	Siphon hose (includes items 2, 3, and 6)	1
5	755-135	Clip	1
6	700-805	Inlet screen	1

Electrical Schematics

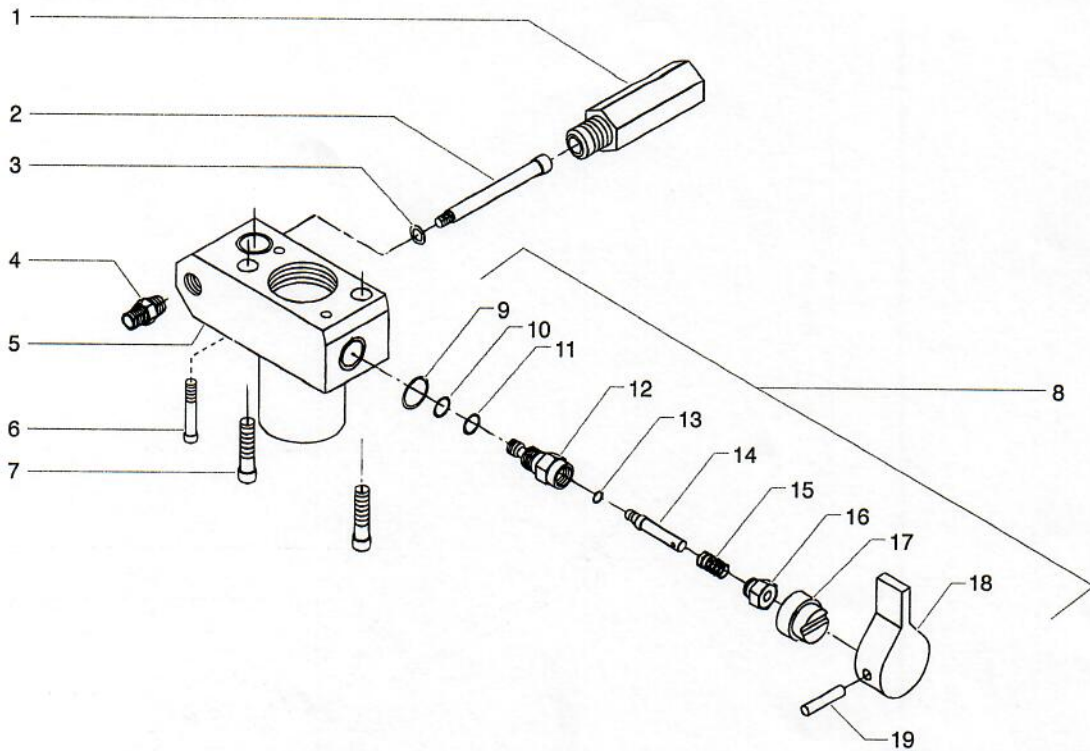
120V



230V



Pump Block Assembly

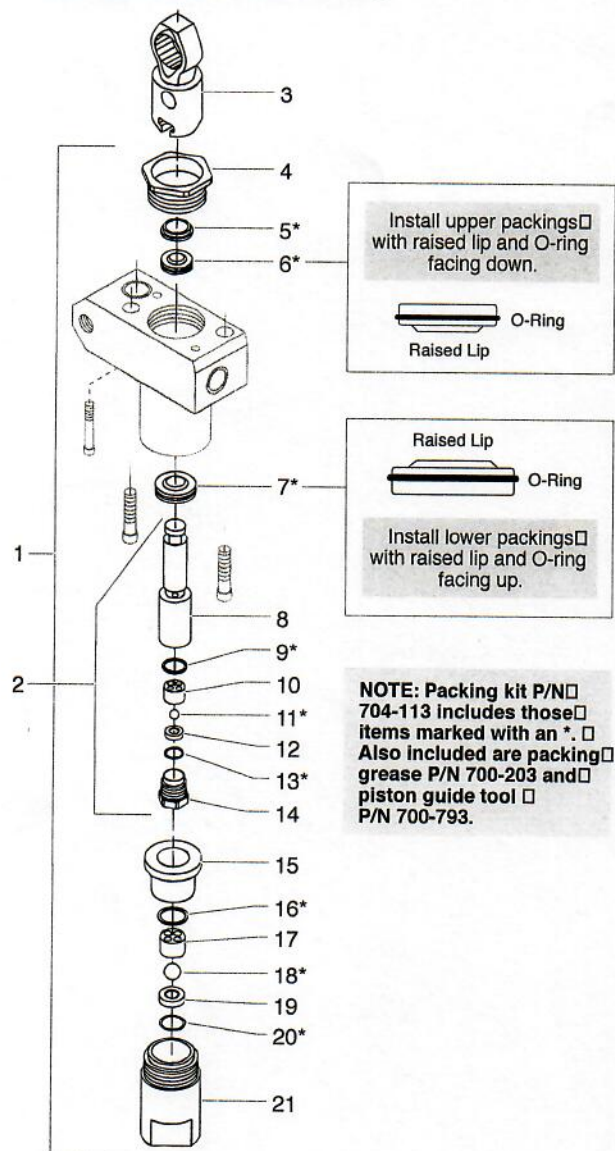


Item	Part #	Description	Quantity
1	700-421	Filter housing	1
2	500-200-03	Filter	1
3	560-038	Seal	1
4	227-006	Fitting	1
5	704-080	Pump block	1
6	704-131	Screw	1
7	704-117	Screw	2
8	700-258	PRIME/SPRAY valve assembly (Includes items 9—19).....	1
9	700-537	Gasket	1
10	221-012	O-ring, Viton.....	1
11	222-012	O-ring, Teflon	1

Item	Part #	Description	Quantity
12	700-246	Valve housing	1
13	700-721	O-ring, Viton.....	1
	700-897	O-ring, Teflon (optional)	1
14	700-250	Valve stem	1
15	700-244	Spring	1
16	700-248	Valve retainer.....	1
17	700-252	Cam base	1
18	700-697	Valve handle	1
19	700-759	Groove pin	1

NOTE: When using "HOT" solvents, replace Viton o-ring (item 13) with optional Teflon o-ring (700-897). Install with o-ring tool (700-890).

Fluid Section Assembly



Item	Part #	Description	Quantity
1	704-120	Fluid section complete	1
1A	704-085	Fluid section complete (includes filter and PRIME/SPRAY valve assembly)	1
2	704-090	Piston assembly (includes items 8-14)	1
3	700-735	Connecting rod	1
4	730-508	Retainer	1
5	700-587	Piston guide	1
6	700-603	Upper packing	1
7	700-601	Lower packing	1
8	704-089	Piston rod	1
9	762-111	Upper seal	1
10	762-135	Upper cage	1
11	762-144	Outlet valve ball	1
12	762-134	Outlet valve seat	1
13	762-057	O-ring	1
14	762-073	Outlet valve retainer	1
15	730-509	Bushing	1
16	700-821	Lower seal	1
17	730-510	Lower cage	1
18	762-145	Foot valve ball	1
19	762-137	Foot valve seat	1
20	762-058	O-ring	1
21	704-054	Foot valve housing	1
22	762-202	Packing tool (not shown)	1

Accessories

Airless Tip Selection

Tips are selected by the orifice size and fan width. The proper selection is determined by the fan width required for a specific job and by the orifice size that will supply the desired amount of fluid and accomplish proper atomization.

For light viscosity fluids, smaller orifice tips generally are desired. For heavier viscosity materials, larger orifice tips are preferred. Please refer to the chart below.

NOTE: Do not exceed the pump's recommended tip size.

The following chart indicates the most common sizes and the appropriate materials to be sprayed.

Tip Size	Spray Material	Filter Type
.011 — .013	Laquers and stains	100 mesh filter
.015 — .019	Oil and latex	50 mesh filter
.021 — .026	Heavy bodied latex and blockfillers	5 mesh filter

Fan widths measuring 8" to 12" (20 to 30 cm) are most preferred because they offer more control while spraying and are less likely to plug.

Liquid Shield

Cleans and protects spray systems against rust, corrosion and premature wear.

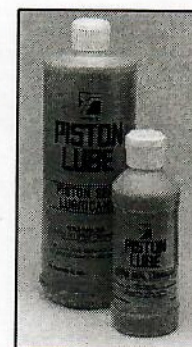
Part No.	Description
700-888	Case of 12 (1 quart bottles)
700-889	1 Quart



Piston Seal Lubricant (P.S.L.)

Specially formulated to prevent materials from adhering to the piston rod, which becomes abrasive to the upper seals. Piston Lube will break down any material that may accumulate in the wet cup and keep it from drying.

Part No.	Description
700-925	8 Ounce Individual
700-926	1 Quart Individual
700-911	Case of 12 (8 ounce bottles)
700-912	Case of 12 (1 quart bottles)



Miscellaneous

Part No.	Description
490-012	Hose Coupling, 1/4" x 1/4"
730-397	High Pressure Fl. Gauge